

## Smart Living by the Sea

This presentation is for illustrative purposes only. The plans and images are for illustrative purposes only, and are subject to change upon receipt of a building permit / permit for changes from the authorities. E&OE.





## To live by the sea...

To momentarily pause the hectic pace of modern living and go to the beach. Listen to the whisper of the waves, feel the silence, breathe the fresh air, look to the horizon and simply enjoy the tranquility...

**This is your opportunity to improve your quality of life**



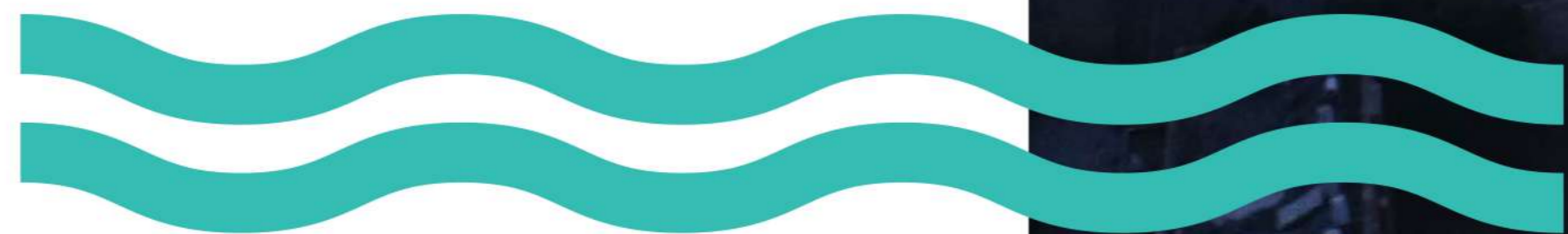
## A new home with the flavor of the old

---

We invite you to meet your new neighbors  
At the King Solomon project - a charming new residential complex Now being built in the highly sought-after north Netanya area, two blocks from the sea, a mere 200 meters away.

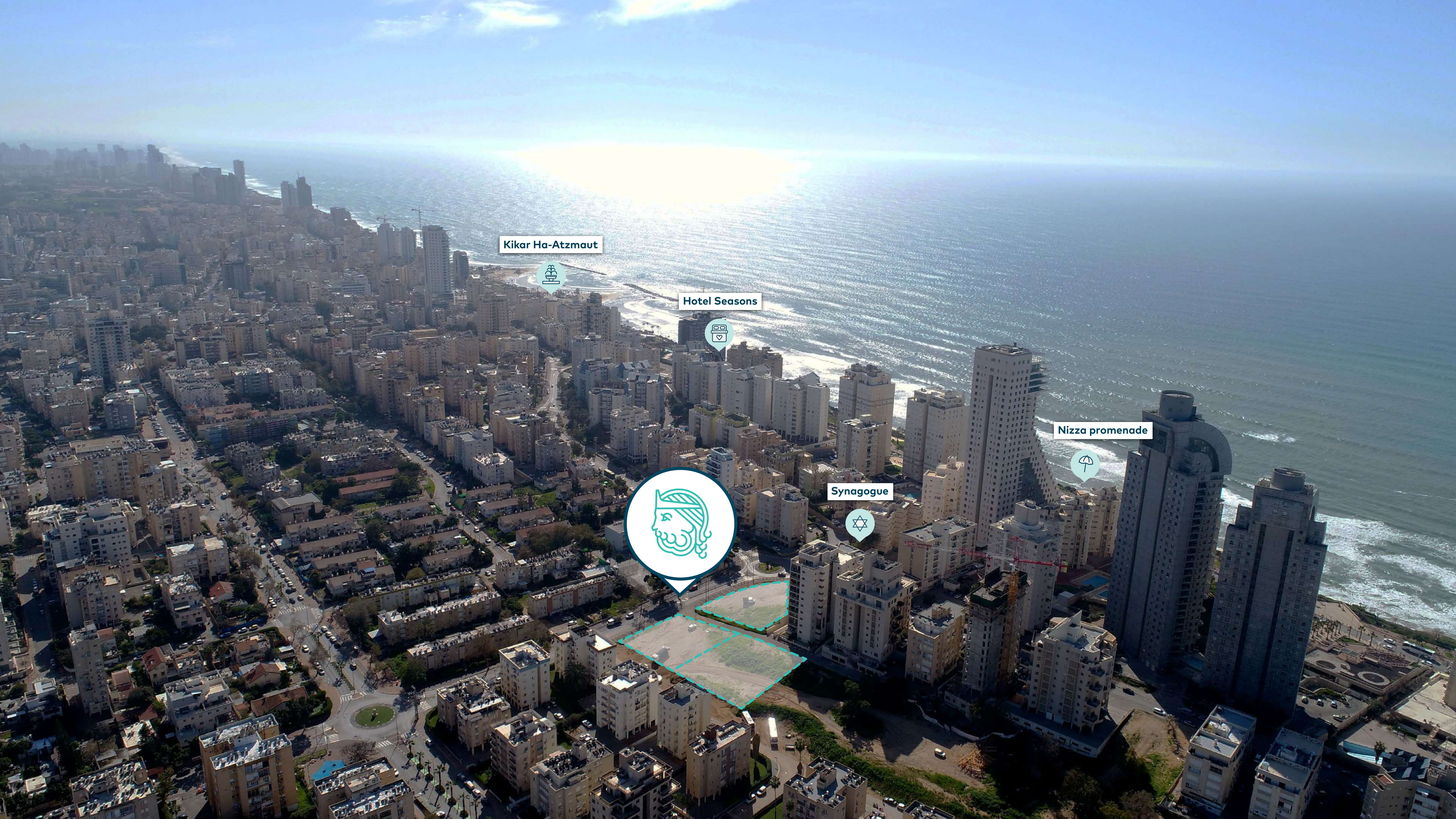
The residential units are located in the heart of a quiet and pastoral neighborhood, just steps away from the Nitza promenade and the Four Seasons beach, close to a variety of attractions and community services.

Three boutique buildings, including an impressive lobby, parking and storage for each apartment, a smart electricity system, and a large variety of apartments – including 3, 4, 5, and 6-room apartments, penthouses and garden apartments.









Kikar Ha-Atzmaut



Hotel Seasons



Nizza promenade

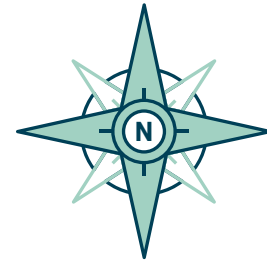


Synagogue





# Site Plans

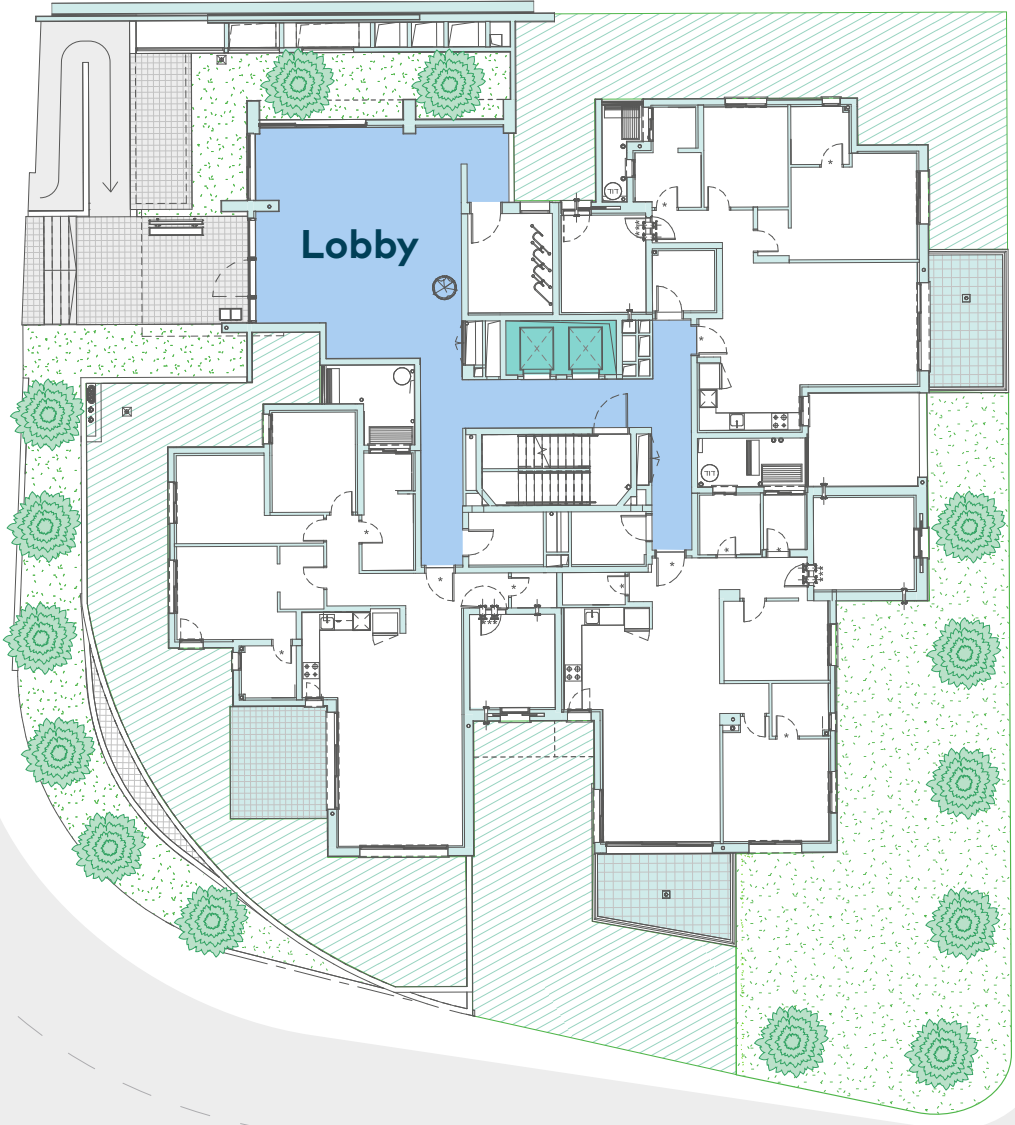


200 meters from the sea

**Building A**

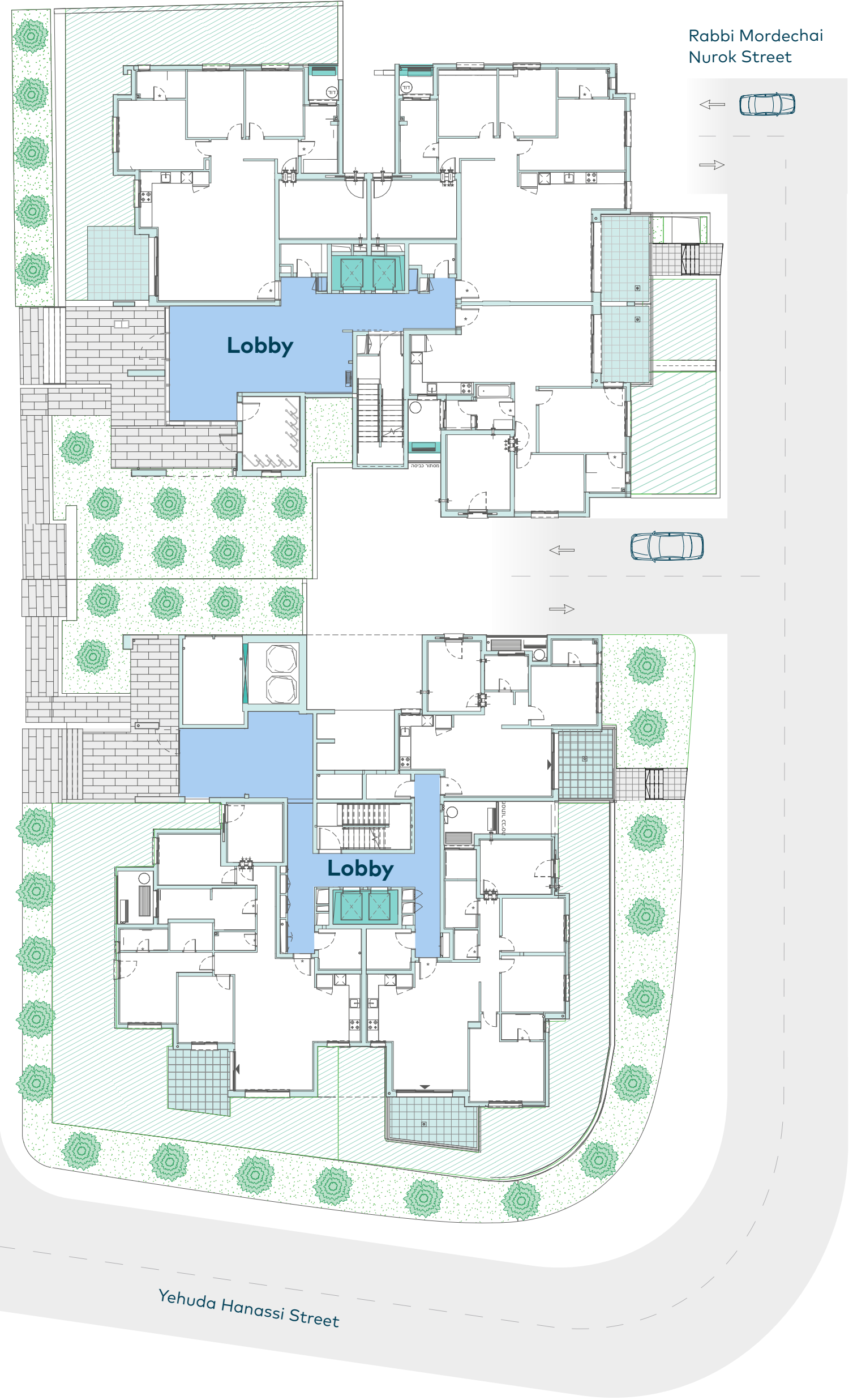
Entry and exit to the parking lot

Shlomo Hamelech Street



26 meters between buildings

Shlomo Hamelech Alley



Entry and exit ramp to the common parking lot for buildings B and C – Terraced 1

**Building C**

Entry and exit to the common parking lot for buildings B and C

**Building B**

## Legend:

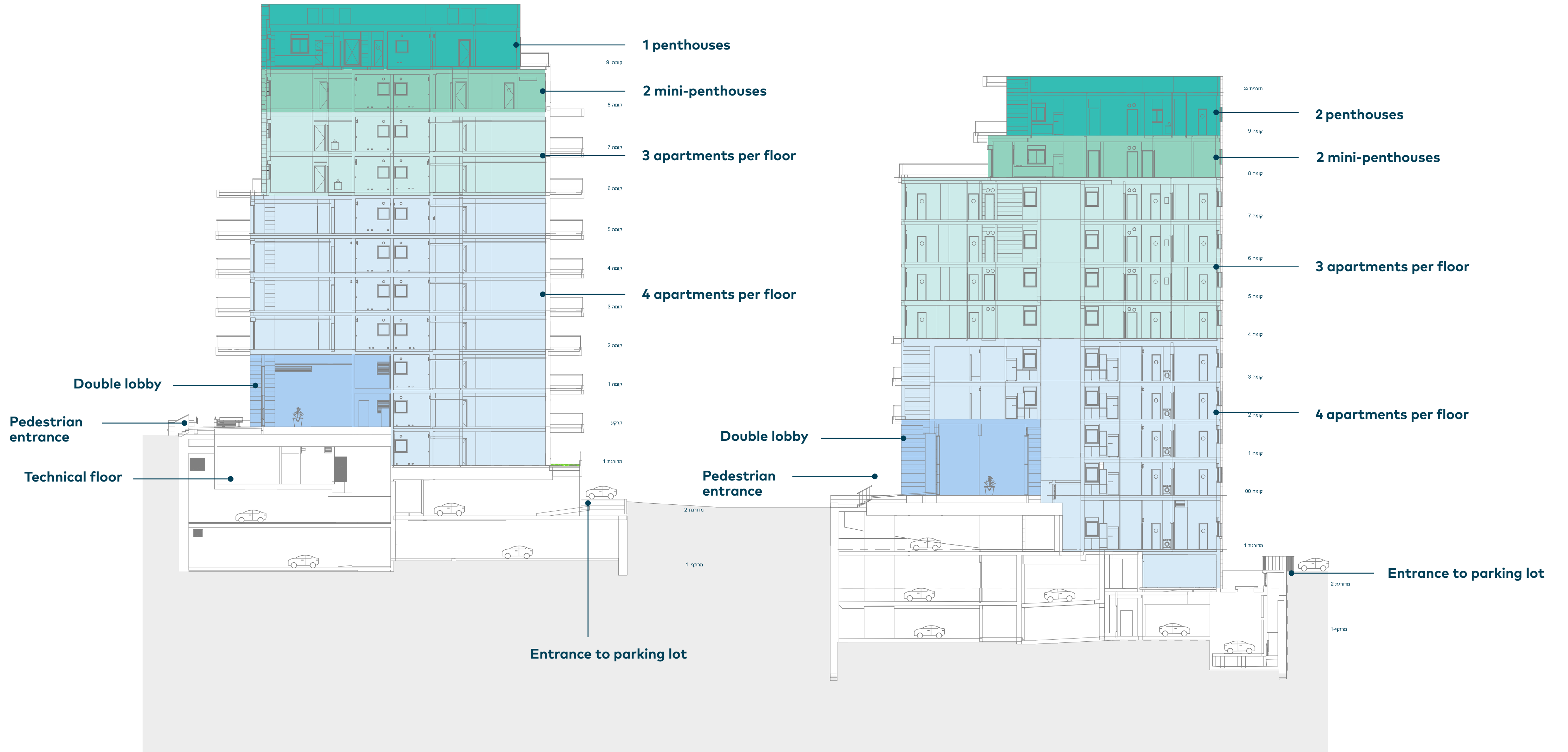
- Balcony
- Private garden
- Elevators
- Lobby



# Cross-Section

Building A

Building B and C





# Typical floor

4 apartments per floor

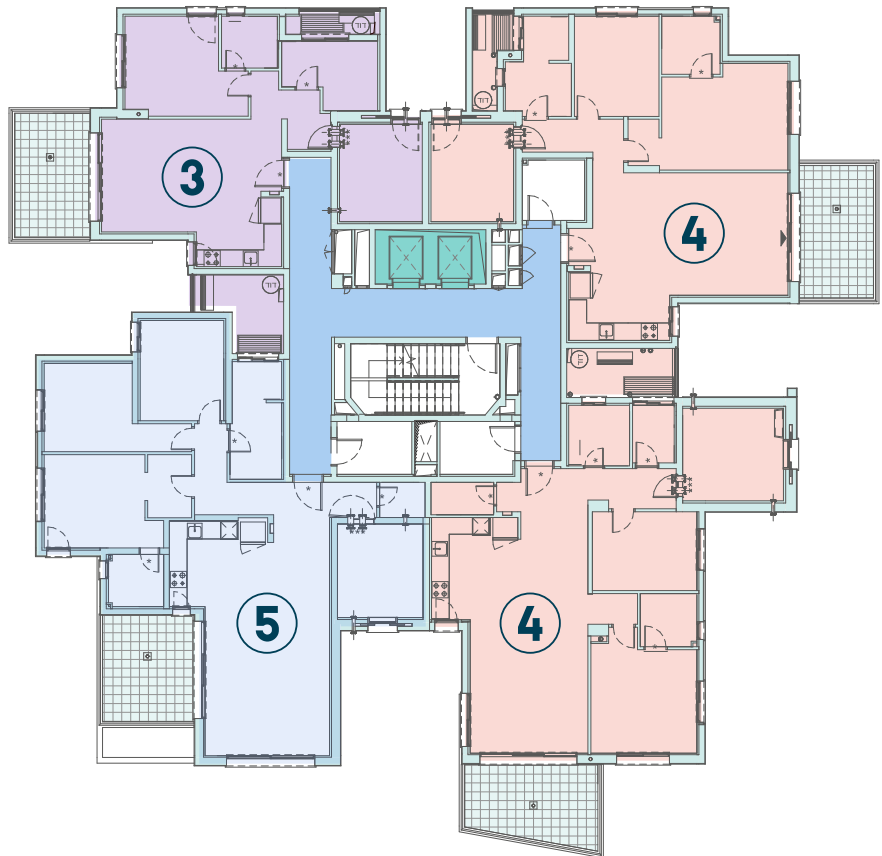


200 meters from the sea

Shlomo Hamelech Street

**Building A**

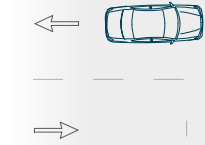
Ground floor to 5<sup>th</sup> floor



26 meters between buildings

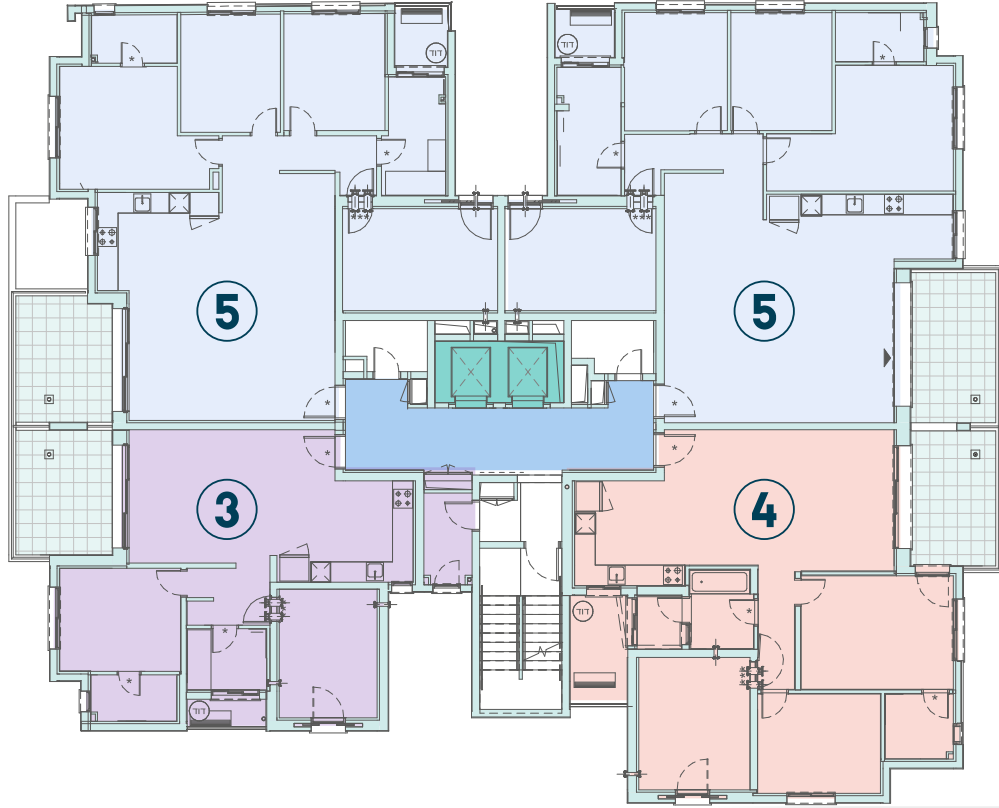
Shlomo Hamelech Alley

Rabbi Mordechai Nurok Street



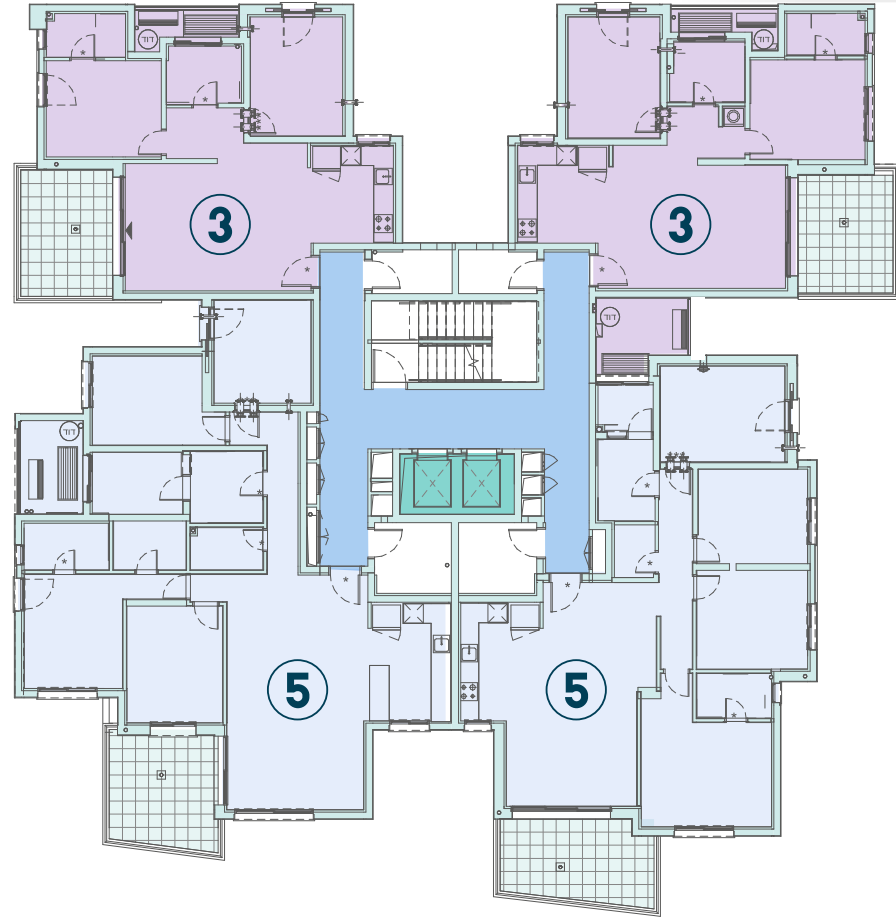
**Building C**

Ground floor to 6<sup>th</sup> floor



**Building B**

Ground floor to 3<sup>rd</sup> floor



Yehuda Hanassi Street

**Legend:**

- 5-room apartment
- 4-room apartment
- 3-room apartment
- Lobby
- Elevators



# Typical floor

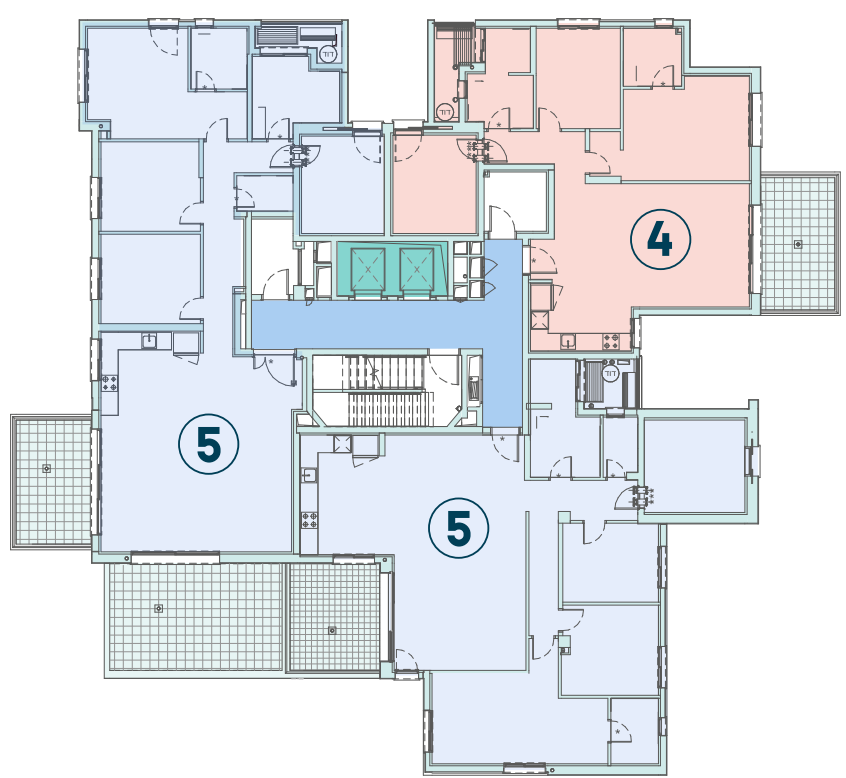
3 apartments per floor



200 meters from the sea

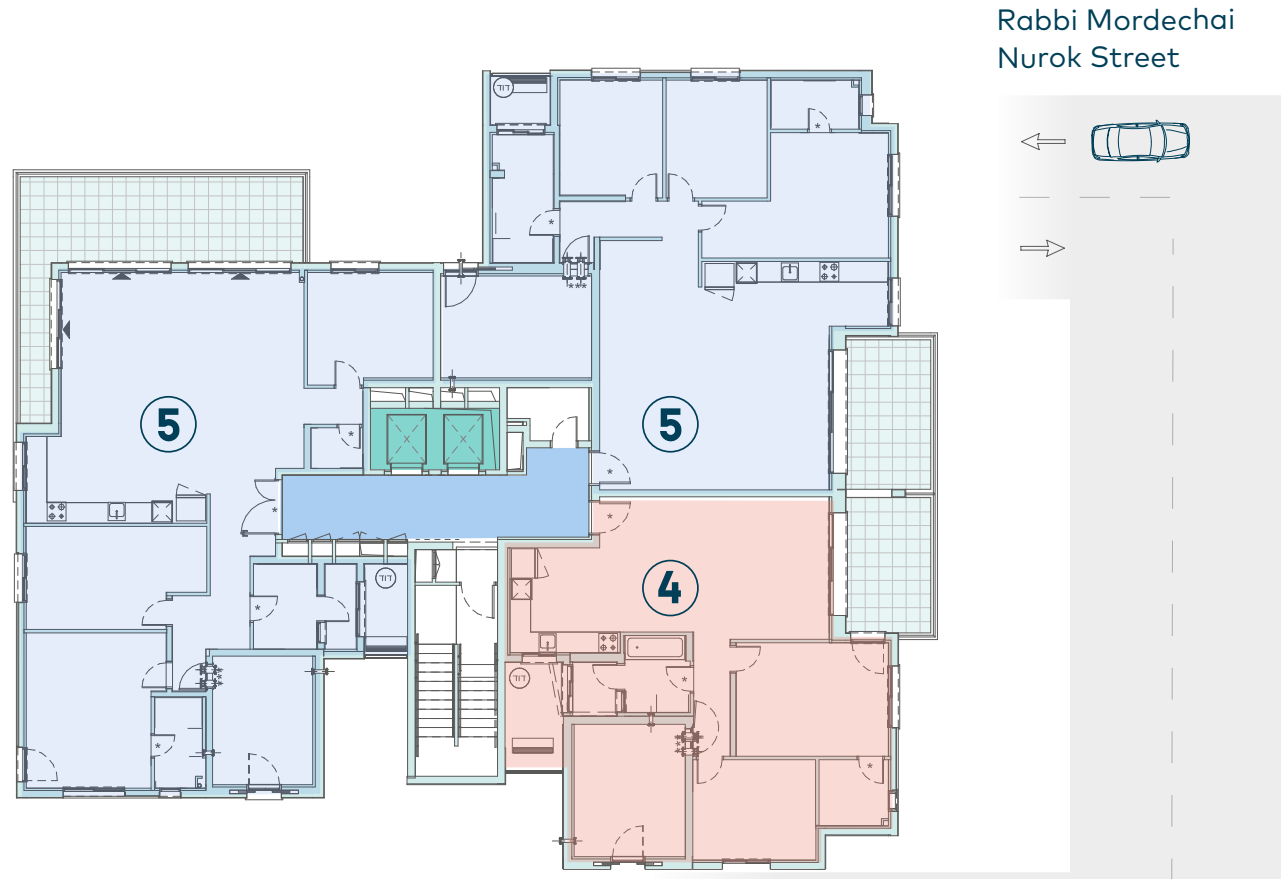
**Building A**  
Floors 6-7

Shlomo Hamelech Street



26 meters between buildings

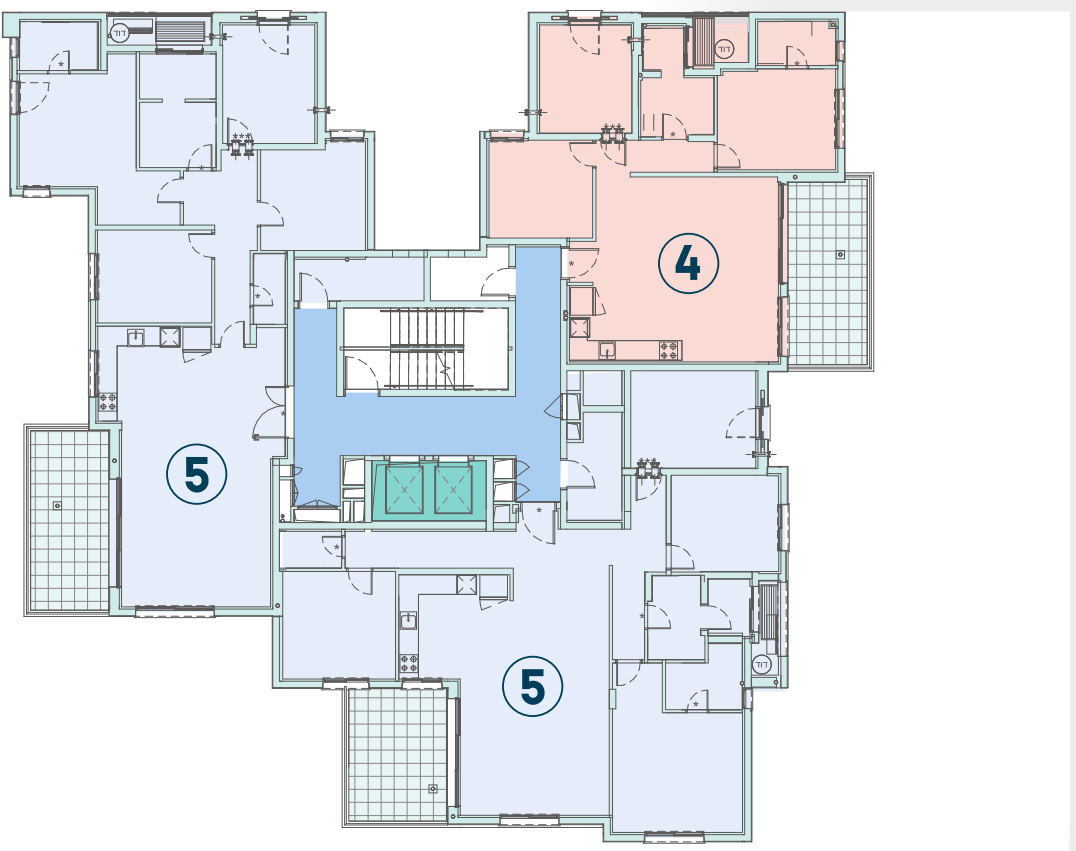
Shlomo Hamelech Alley



Rabbi Mordechai Nurok Street

**Building C**

Floors 7-8



**Building B**

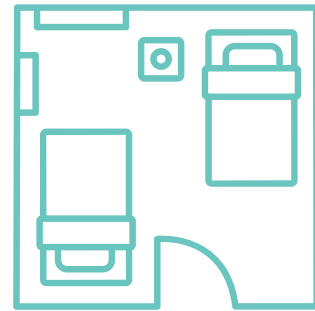
Floors 4-7

Yehuda Hanassi Street

- Legend:**
- 5-room apartment
  - 4-room apartment
  - 3-room apartment
  - Lobby
  - Elevators



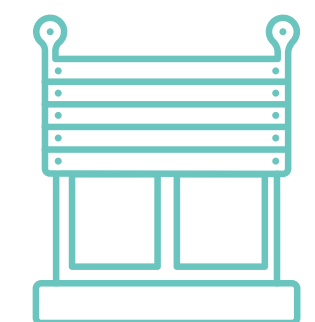
# Main Technical Specifications



- Storage and parking for each apartment
- Full air conditioning system, including drop ceilings
- Solar water heater, preparation for gas-powered water heater, gas outlet on the balcony in selected apartments



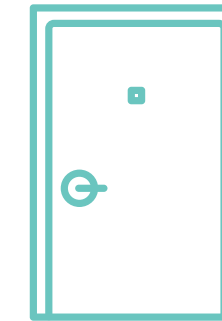
- Quality equipped kitchen, including an island in selected apartments, stainless steel or acrylic sink.
- Cabinets from sandwich wood in a variety of colors, including white, built-in oven unit, and quiet click closing mechanism
- Caesar Stone countertops in a variety of shades



- Windows and blinds by "Klil 7000/9000" or equivalent, insulated glass, and preparation for screens.
- Electric window blinds – except for protected room and wet rooms



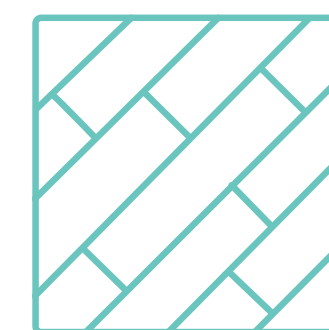
- Advanced, wireless smart electricity system
- 3-phase connection – 3x40 in the penthouses
- Preparation for home theater system



- "Pandor Unique" or equivalent interior doors, including white color and protected room door
- Designer entry door, 1.5 width in selected apartments.



- Acrylic bathtub, suspended toilets, and hidden flushing mechanism made by GROHE or equivalent.
- Suspended integral cabinets, including mirror in the bathroom.



- 80x80 in a variety of series and colors, 60x60 in wet rooms, option for asymmetrical mock deck on the balcony.
- Wall tiles in wet rooms in a selection of colors and sizes.





