

REGINA GARDENS





CYPRUS, PAPHOS' A 21st CENTURY GLOBAL DESTINATION ENRICHED WITH 3000 YEARS OF CULTURAL HERITAGE

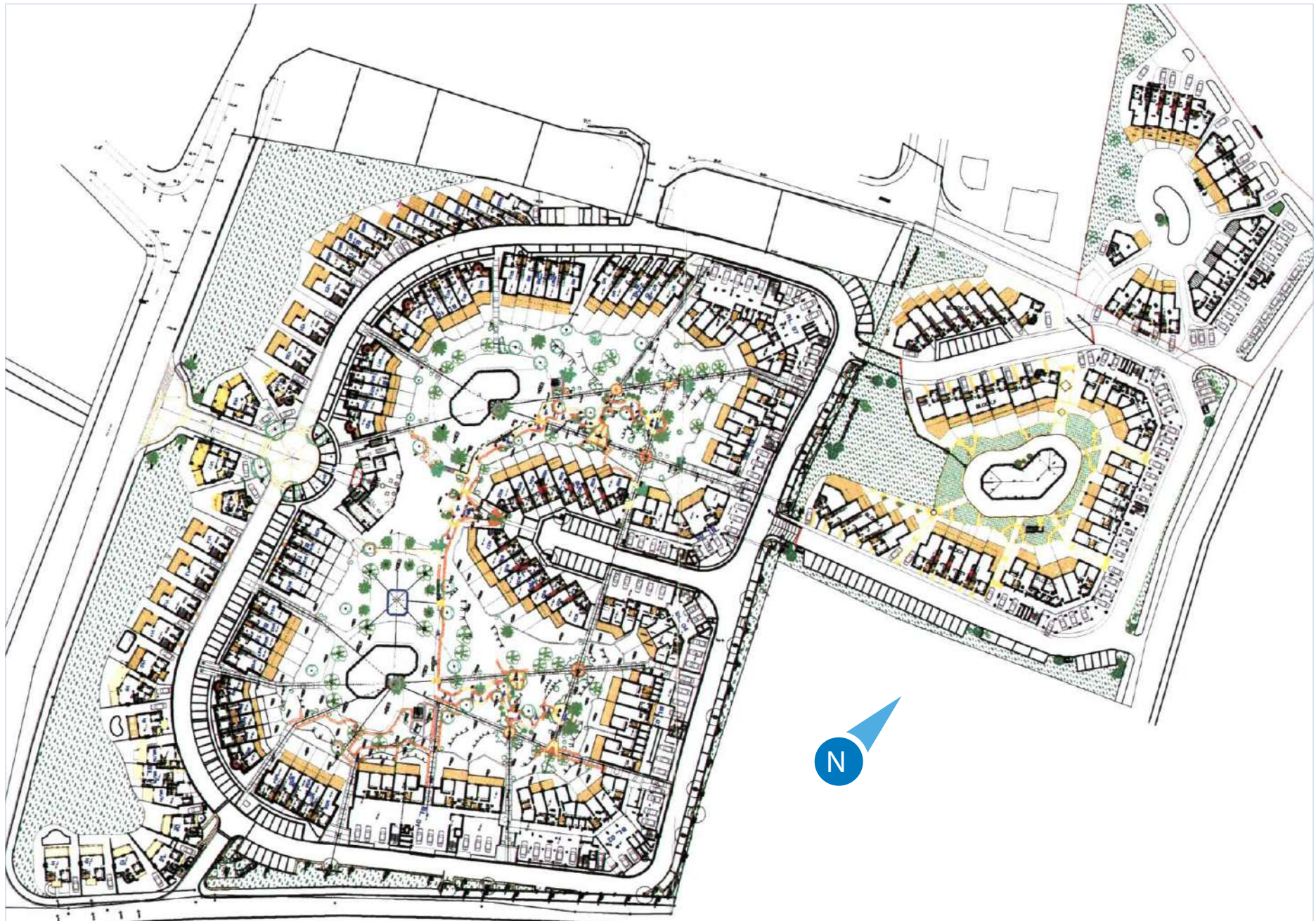
- Only 3 to 4 hours away from London, Berlin, Moscow and Dubai
- Paphos a Good Reason for all Seasons
- Birthplace town of the Goddess of Love & Beauty Aphrodite “Venus”
- The jewel of Cyprus with a mild climate and natural beauty
- Shopping and entertainment amenities and facilities
- Nominated as the European Capital of culture for 2017
- In on Unesco's Word Heritage list of culture and natural treasure
- Has the most beautiful country sides and unspoilt villages on the island
- Sale family and children environment
- Champion in property sales to overseas buyers and Investors





Regina Gardens

REGINA GARDENS | SITE PLAN



Leptos Regina Gardens

THE PROJECT

Leptos Regina Gardens is located on a privileged site in Paphos 300 metres from the sea and within walking distance of the shops and nightlife. This project is based upon the success of “Leptos Paradise Gardens” with distinct Mediterranean architecture.

The design is synonymous to light, bright spaces, sun terraces and balconies for enjoyable indoor and outdoor living. There is a unique combination of two and three bedroom garden villas and maisonettes as well as one, two and three bedroom apartments and exquisite penthouses.

The superb location combined with the carefully planned interior designs and layout surrounding the very large communal gardens and swimming pools make Leptos Regina Gardens the ideal investment for year-round enjoyment.

FACILITIES AND AMENITIES

- Children's pool
- Close to all amenities & facilities
- Close to bus service
- Club house
- Communal Swimming pools
- Elevators
- High letting potential
- Mature gardens
- Property management
- Sun terraces & large balconies





PRICE: € 198.500
(NON VATABLE)

Leptos Regina Gardens

- Furnished
- White goods
- A/cs units
- Title deeds
- Communal s.pool
- Aluminum shutters
- Wooden kitchen worktops

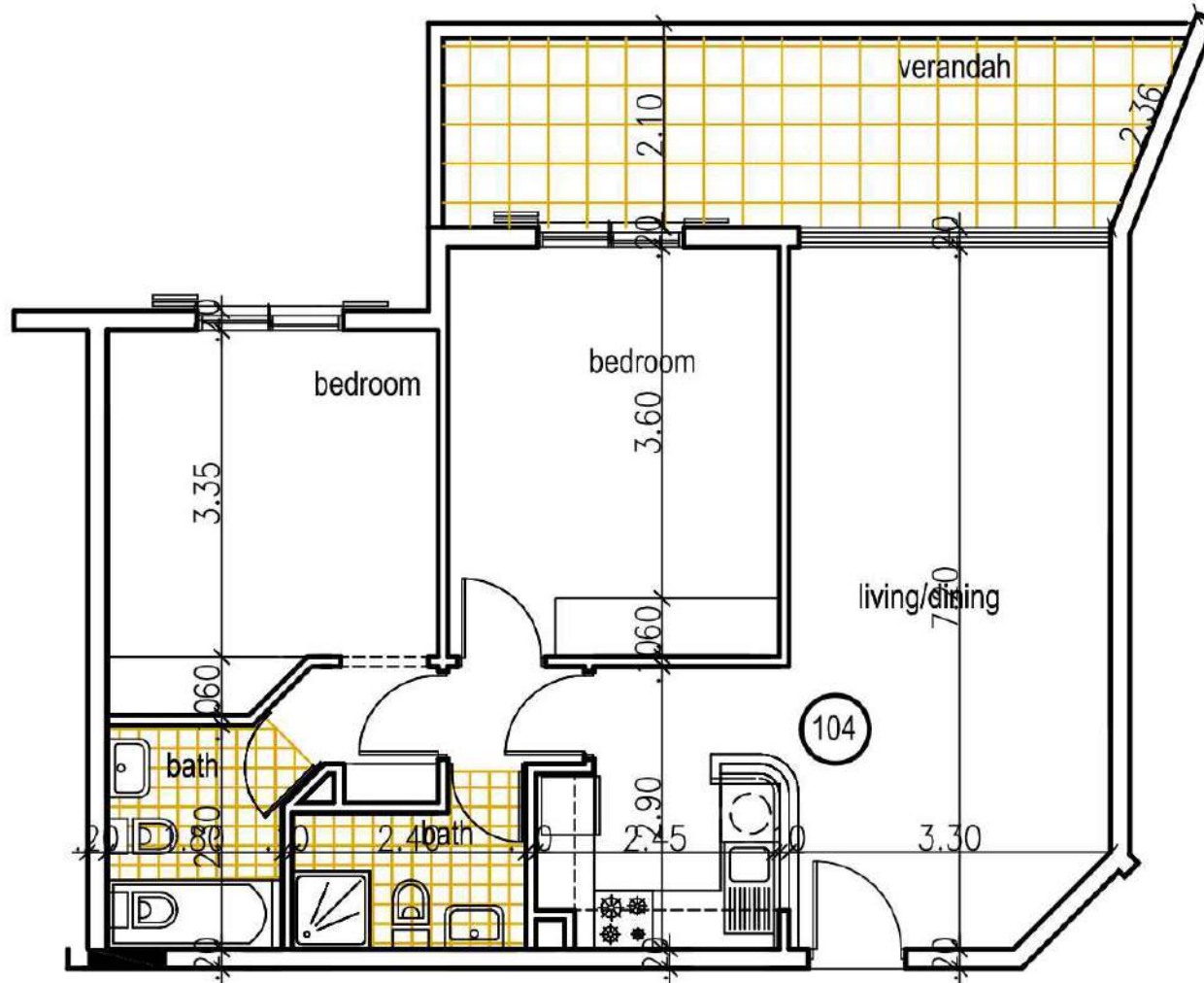
Apt. No: **B.7 F104**

2 BEDROOMS | **2** BATHROOMS



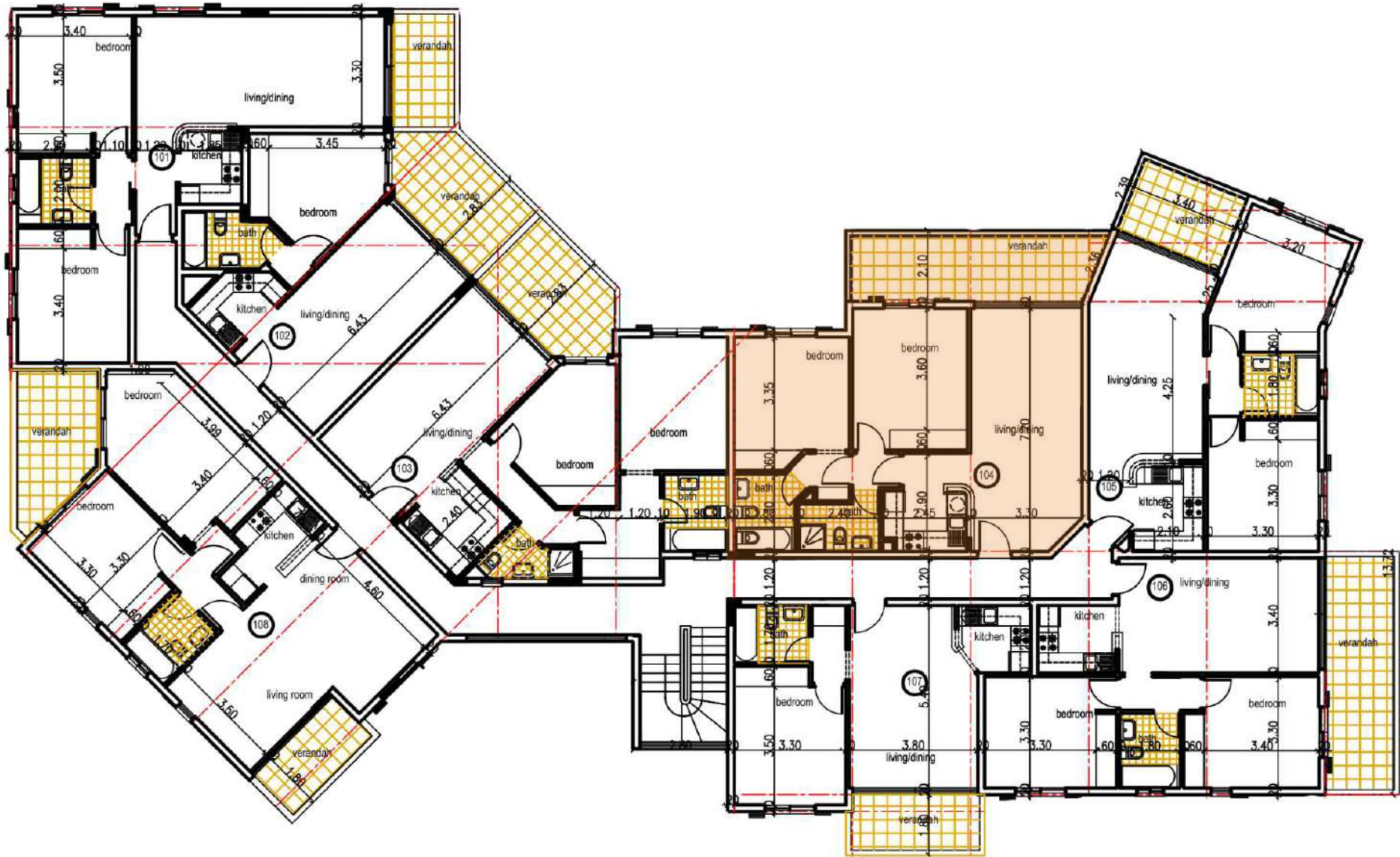
PHOTOS OF SIMILAR PROPERTY

Cov. Area: **77 m²** | Total cov. area: **105 m²** | Cov. Ver.: **23 m²** | Unc. Ver.: **5 m²**

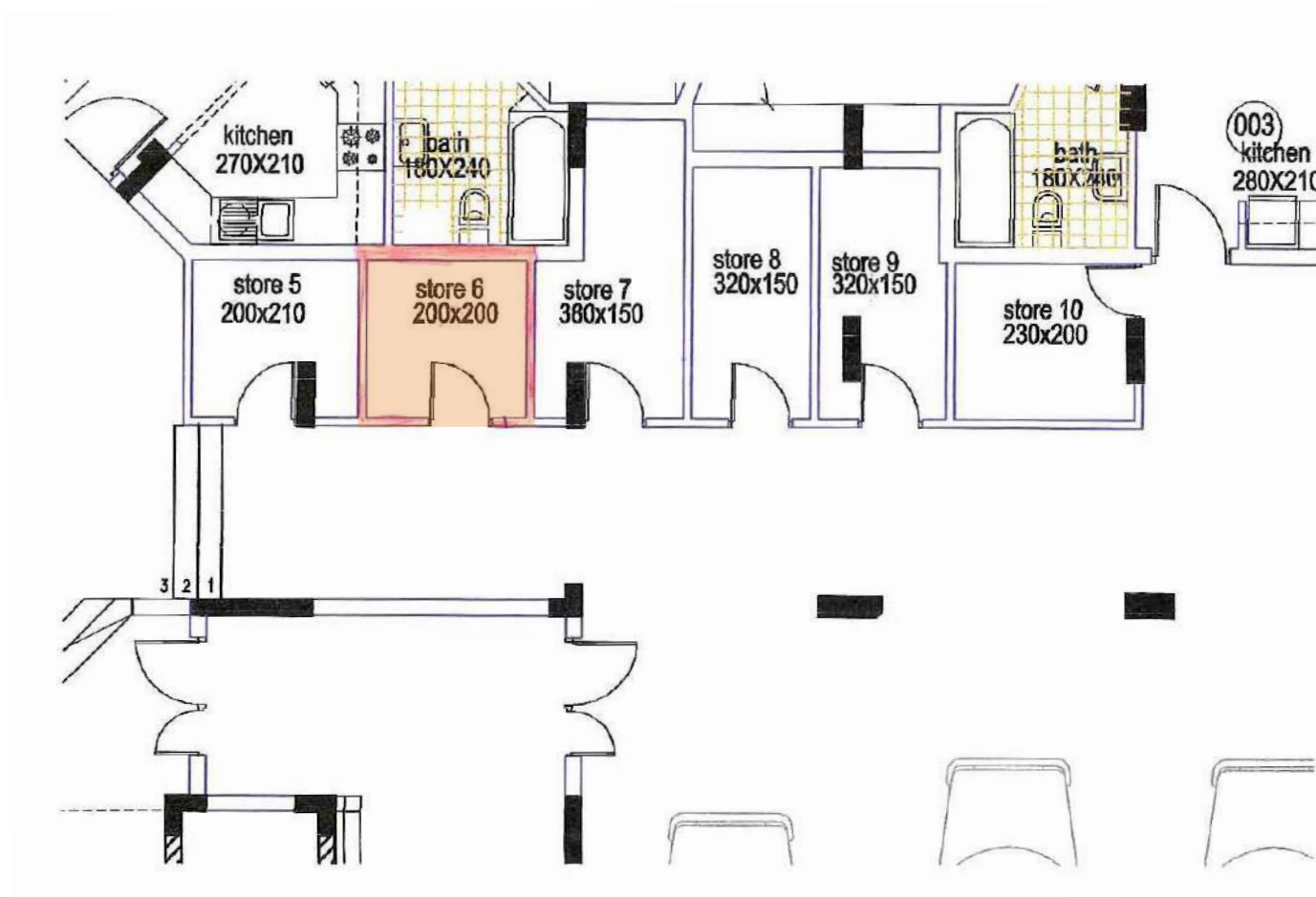


GROUND FLOOR

REGINA GARDENS | BLOCK 7 F104 | FLOOR PLANS



1st FLOOR PLAN



GROUND FLOOR - STORE ROOM LOCATION