

PAPHOS GARDENS





PAPHOS GARDENS RESORT

CYPRUS, PAPHOS' A 21st CENTURY GLOBAL DESTINATION ENRICHED WITH 3000 YEARS OF CULTURAL HERITAGE

Only 3 to 4 hours away from London, Paris, Berlin, Moscow and Dubai, Paphos sits on the crossroads of Europe with Africa and Asia.

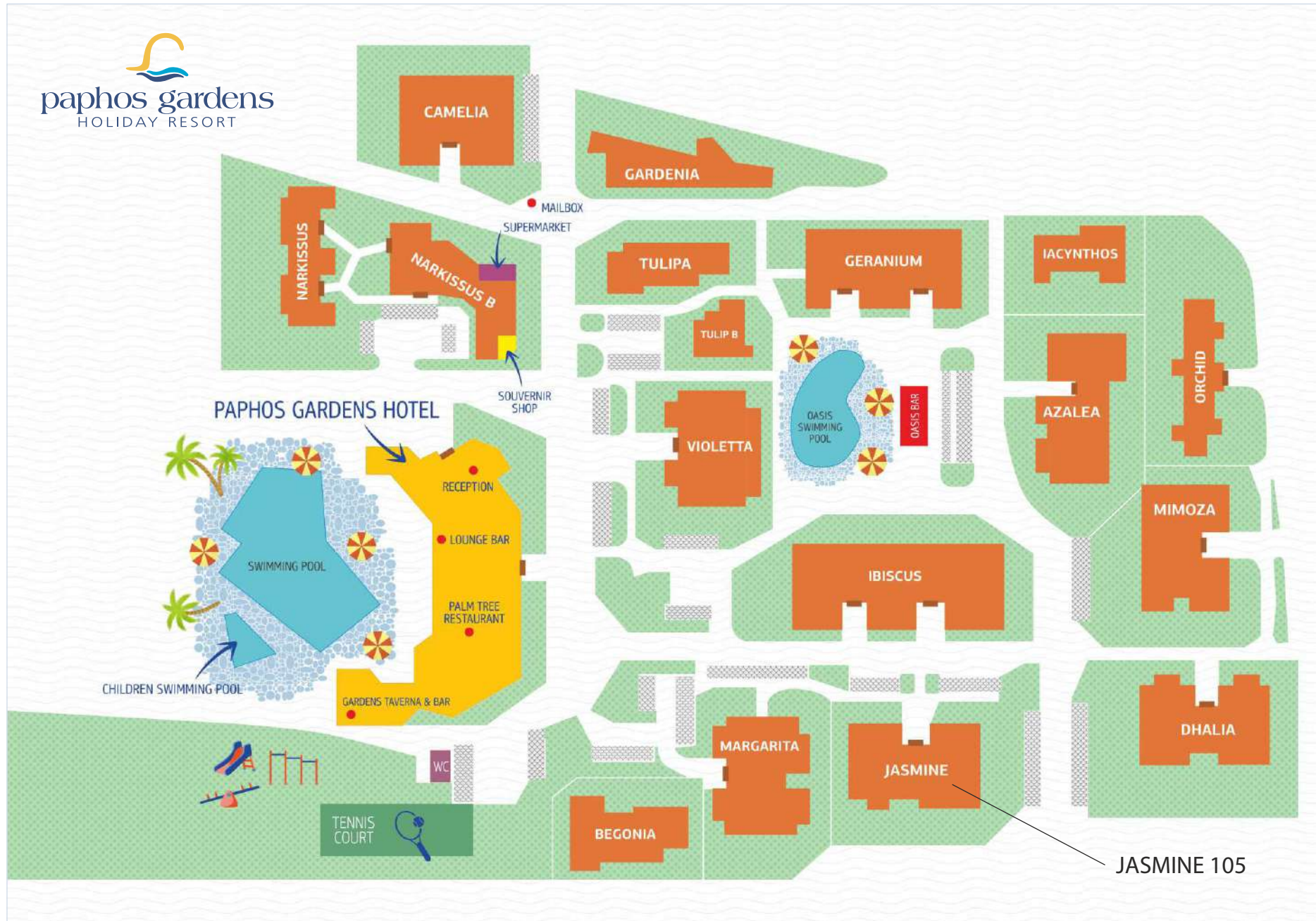
A bridge of the old with the new, where the UNESCO heritage archaeological park, the medieval port and castle and the neoclassical civic buildings and schools of the city centre are complemented by the revamped seafront promenade, the newly-opened state of the art international airport, the under development 1000 - berth marina and Leptos Neapolis Smart EcoCity – the city within a city - which provides for an excellent international university, an established private hospital, shopping and entertainment amenities and a modern business centre.

This modern infrastructure, new country roads, golf courses, telecommunications and eco-friendly projects guarantee Paphos position as a property hot-spot.





PAPHOS GARDENS | SITE PLAN



JASMINE 105

Leptos Paphos Gardens

THE PROJECT

Paphos Gardens, an Award winning project, is situated in the most sought after location of Kato Paphos just 150 meters from the sea and a short stroll from the picturesque harbour, the night life of Paphos and the luxury beachfront hotels.

A mixture of self-contained studio, one and two bedroom apartments and two and three bedroom maisonettes, this popular development enjoys two outdoor swimming pools, a heated indoor pool, a health club, tennis courts, children's play area, mini market, bar, restaurants etc.

All properties are low rise (ground floor and first floor) and do not spoil the natural beauty of the area and all communal areas are carefully landscaped and maintained.

FACILITIES AND AMENITIES

- Award winning project
- Children's play area
- Choice of 3 swimming pools
- 24h Reception
- Fitness club with gym
- Landscaped Gardens
- Next to blue flag sandy beaches
- Resort Restaurant – Bar – Cafeteria
- Super market
- Tennis court



PAPHOS GARDENS





PRICE: € 312.500
(NON VATABLE)



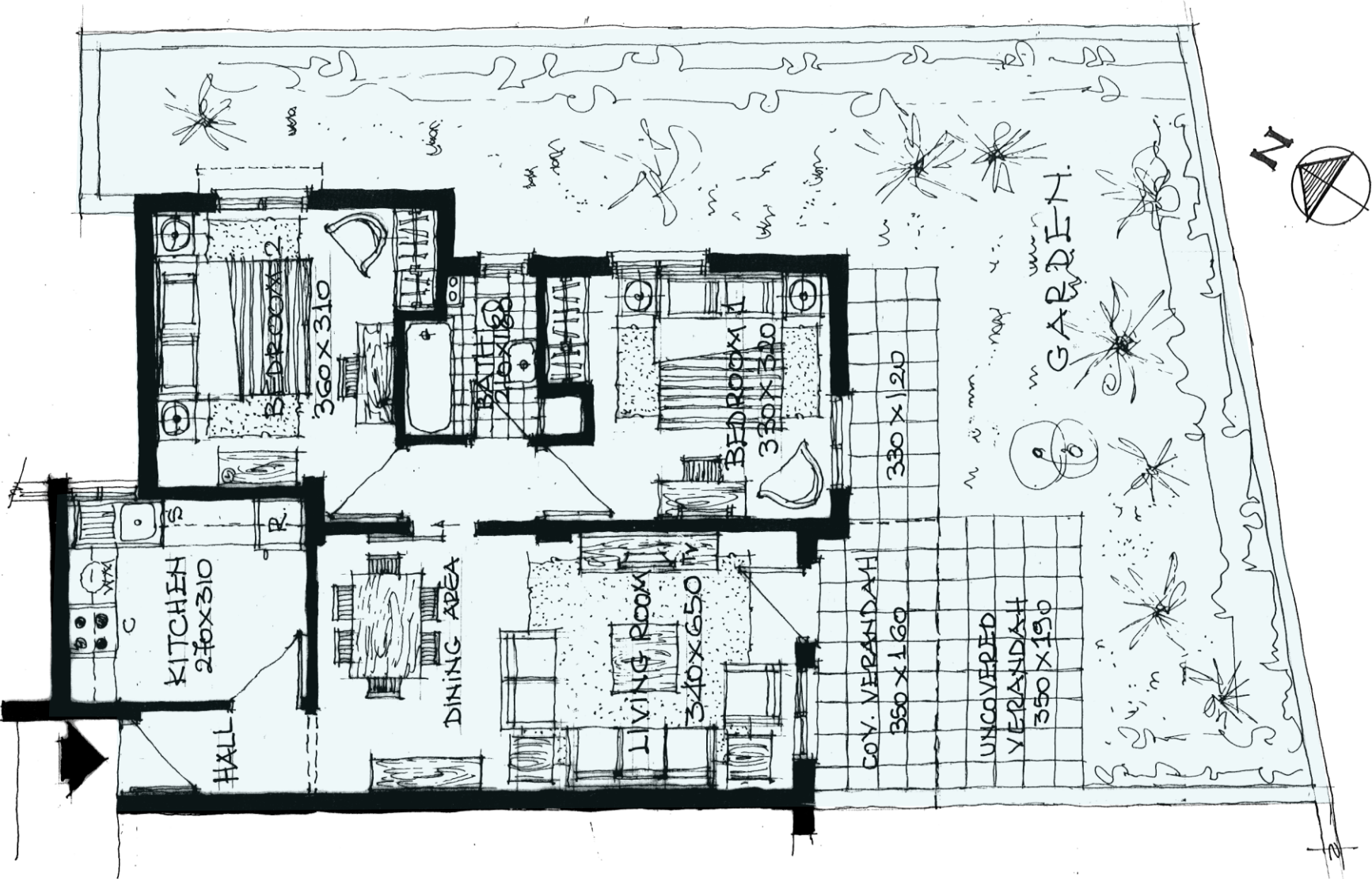
Leptos Paphos Gardens

- AA/C Units
- Ample parking
- Fitted kitchen
- Fully furnished
- Private garden
- Ready Title deeds
- Recently renovated
- Safety locks

Jasmine No: 105

2 BEDROOMS | 1 BATHROOM

Cov. Area: 76 m² | Cov. Ver.: 5.6 m² | Uncov. Ver.: 10.5 m²



GROUND FLOOR