

# KINGS PALACE

FLAT 105 B.3





# CYPRUS, PAPHOS' A 21<sup>st</sup> CENTURY GLOBAL DESTINATION ENRICHED WITH 3000 YEARS OF CULTURAL HERITAGE

- Only 3 to 4 hours away from London, Berlin, Moscow and Dubai
- Paphos a Good Reason for all Seasons
- Birthplace town of the Goddess of Love & Beauty Aphrodite "Venus"
- The jewel of Cyprus with a mild climate and natural beauty
- Shopping and entertainment amenities and facilities
- Nominated as the European Capital of culture for 2017
- In on Unesco's Word Heritage list of culture and natural treasure
- Has the most beautiful country sides and unspoilt villages on the island
- Sale family and children environment
- Champion in property sales to overseas buyers and Investors





# KINGS PALACE | SITE PLAN





# Leptos Kings Palace

## THE PROJECT

*Leptos Kings Palace provides an idyllic lifestyle for discerning people. It is located in an exclusive coastal area, within walking distance of the shops and nightlife, on a gently sloping hillside overlooking the sea.*

*The whole area abounds in tradition and culture with the footprints of the past close at hand-the famous archaeological sites of the Tombs of the Kings, the breathtaking mosaics in the House of Dionyssos and the ancient castle next to the quaint fishing harbour of Paphos with its array of waterside restaurants.*

*There is a large swimming pool with relaxing sun terraces and landscaped gardens. Superior quality interior finishes with Euro-style kitchens and large sun terraces make these luxurious properties an irresistible opportunity*

## FACILITIES AND AMENITIES

- Ample Parking areas
- Attached to a Green Area
- Easy Access to All Amenities
- Landscaped Gardens
- Large Communal Swimming Pools
- Property Management Service
- Restaurants, Taverna, Cafeterias, Pubs
- Very close to Shopping Areas
- Very close to the beach





PRICE: € 133.500  
( NON VATABLE )

## Leptos Kings Palace

- Sea view
- Furnished
- White Goods
- A/cs Throughout
- Title Deeds
- Communal S.Pool
- Aluminum shutters

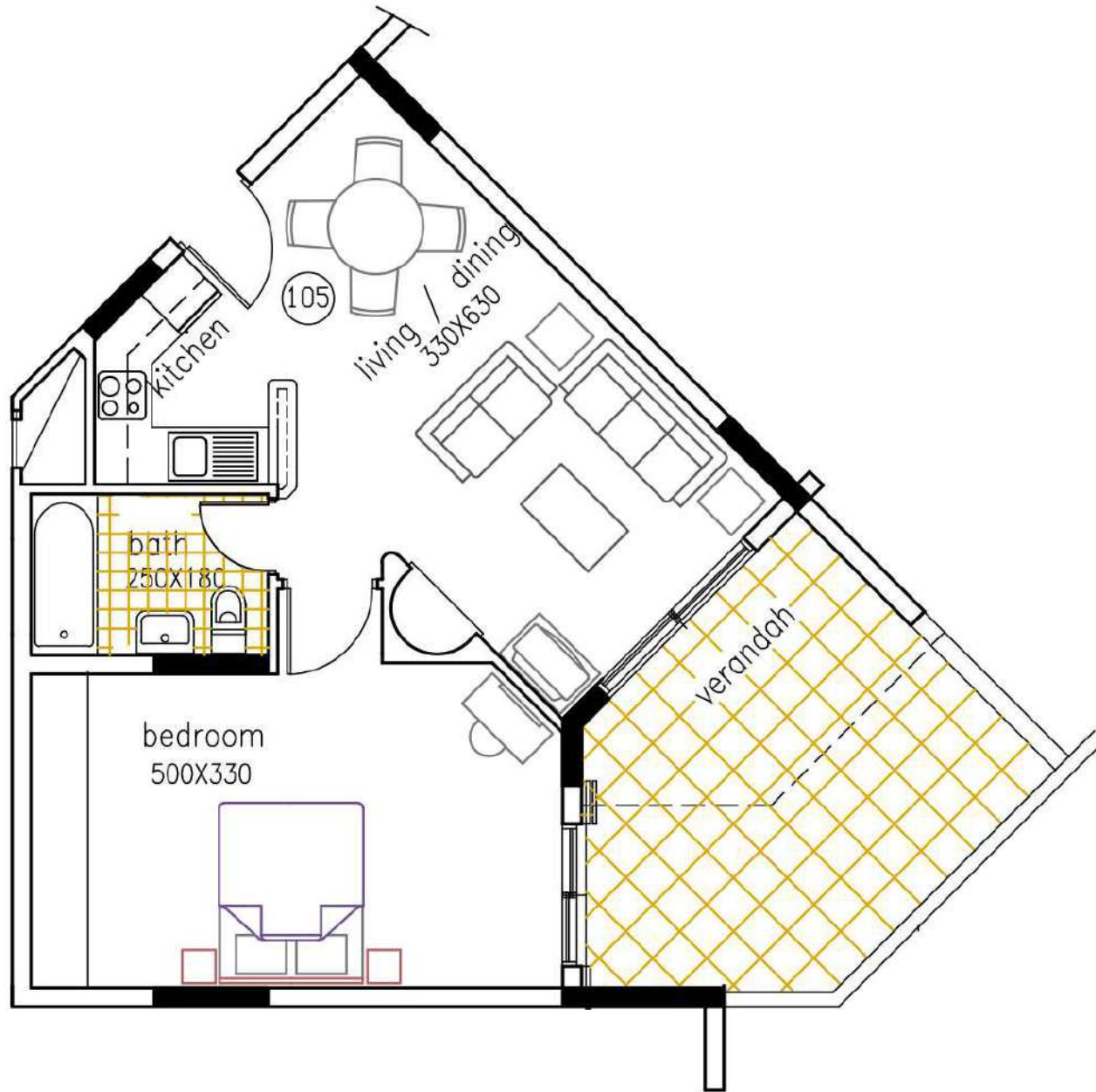
Apt. No: 105 B.3

1 BEDROOMS | 1 BATHROOMS



Total Cov. Area: 62 m<sup>2</sup> | Cov. Area: 55 m<sup>2</sup> | Uncov. Ver.: 12 m<sup>2</sup> | Cov. Ver.: 7 m<sup>2</sup>





APARTMENT PLAN

# KINGS PALACE APARTMENT 105 B.3 | FLOOR PLANS



1<sup>st</sup> Floor Plan